

# FIELD DAY 2019



[www.arrl.org](http://www.arrl.org)

ARRL Field Day is the single most popular on-the-air event held annually in the US and Canada. More than 35,000 radio amateurs gather to operate from remote locations. Field Day is a picnic, a **campout, practice for emergencies**, an **informal contest** and, most of all, **FUN!**

It is an excellent opportunity to demonstrate Amateur Radio to the organizations that Amateur Radio might serve in an emergency, as well as the general public. The contest part is simply to contact as many other stations as possible and to learn to operate our radio gear in abnormal situations and less than optimal conditions.

The first Field Day was in 1933, 86 years ago. Winner made 62 QSOs.

# FIELD DAY 2019

## MAPLE GROVE RADIO CLUB - KØLTC



# FIELD DAY PARTICIPATION

- CHAIR - Carolyn Maristany
- CO-CHAIR – Roy Wood
- PUBLICITY - Melanie Olson
- SOCIAL MEDIA & PHOTOS – Kelly Murphy
- FOOD - Jim and Ruth Claseman
- SETUP & STRIKE - Several
- FIELD DAY ATTENDANCE = 69 Attendees signed in
  - MGRC Members = 38
  - Guests = 31
- ARRL ENTRY – Prepared & Submitted – Roy Wood

# PLANNING

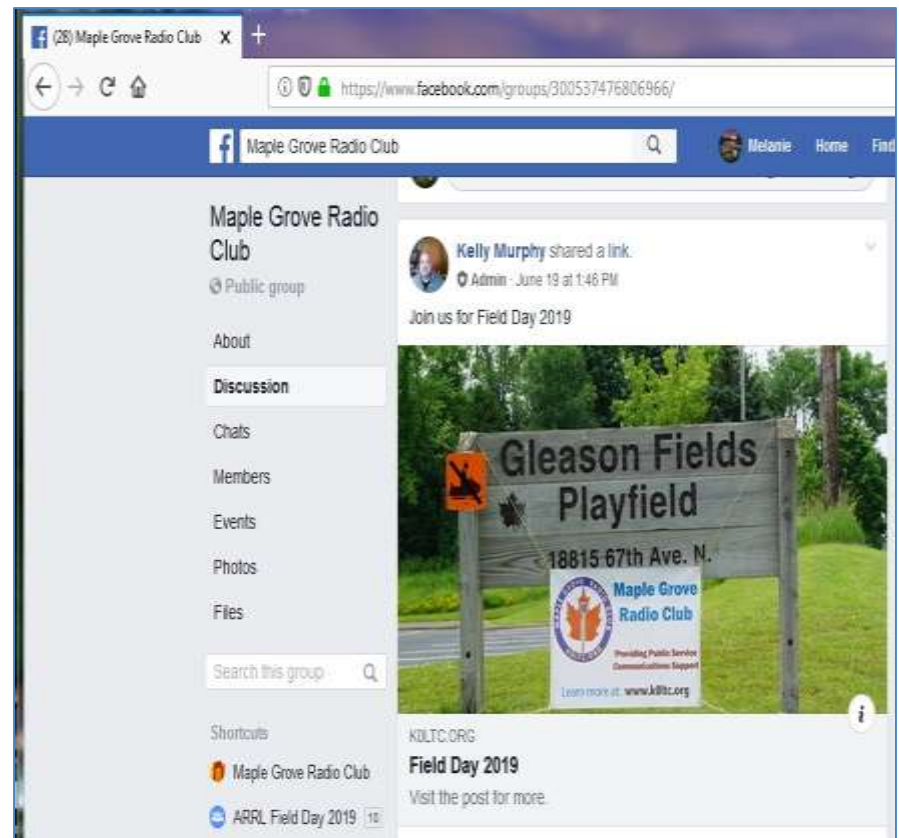
- BUILT ON HISTORY OF PREVIOUS FIELD DAYS
  - LEADERSHIP, RELATIONS, CONTRIBUTIONS, EXPERIENCE, INVENTORY
- SECURE LOCATION & PERMITS
- ASSIGN ROLES & TASKS
- DECIDE STATION CLASS
- PUBLICIZE
- INVITE OFFICIALS
- REVIEW CLUB INVENTORY & NEEDS
- UPDATE & CONFIGURE LOGGING SOFTWARE
- MEALS
- INVENTORY & TEST
- PACK GEAR & TRANSPORT TO SITE



# PUBLICITY



- ✓ ARRL Field Day Site Locator
- ✓ Set-up in a public place – Gleason Fields Playfield
- ✓ Social Media  
MGRC Facebook  
Page



- ✓ News Release Published by the Osseo-Maple Grove Press
  - ✓ Information Booth
- Booth



## ✓ Site Visit by Invited Served Agency Official

✓ Invitations sent to MG Fire Chief Tim Bush and Deputies Chris Kummer and Kurt Kramer

✓ MG Fire Chief

Tim Bush

Sponsored

the Field Day

Permit and

Attended the

Event



- Site Visit by ARRL MN Section Manger Skip Jackson



- ✓ Site Visit by Invited Elected Official
  - ✓ Invitations sent to all MG Council Members
  - ✓ Council Member Phil Leith Attended
  - ✓ Great job by Stuart Gilbert for escorting Mr. Leith



# INFORMATION BOOTH



**Maple Grove  
Radio Club**

Providing Public Service  
Communications Support

Learn more at: [www.koltc.org](http://www.koltc.org)

# EDUCATIONAL ACTIVITY

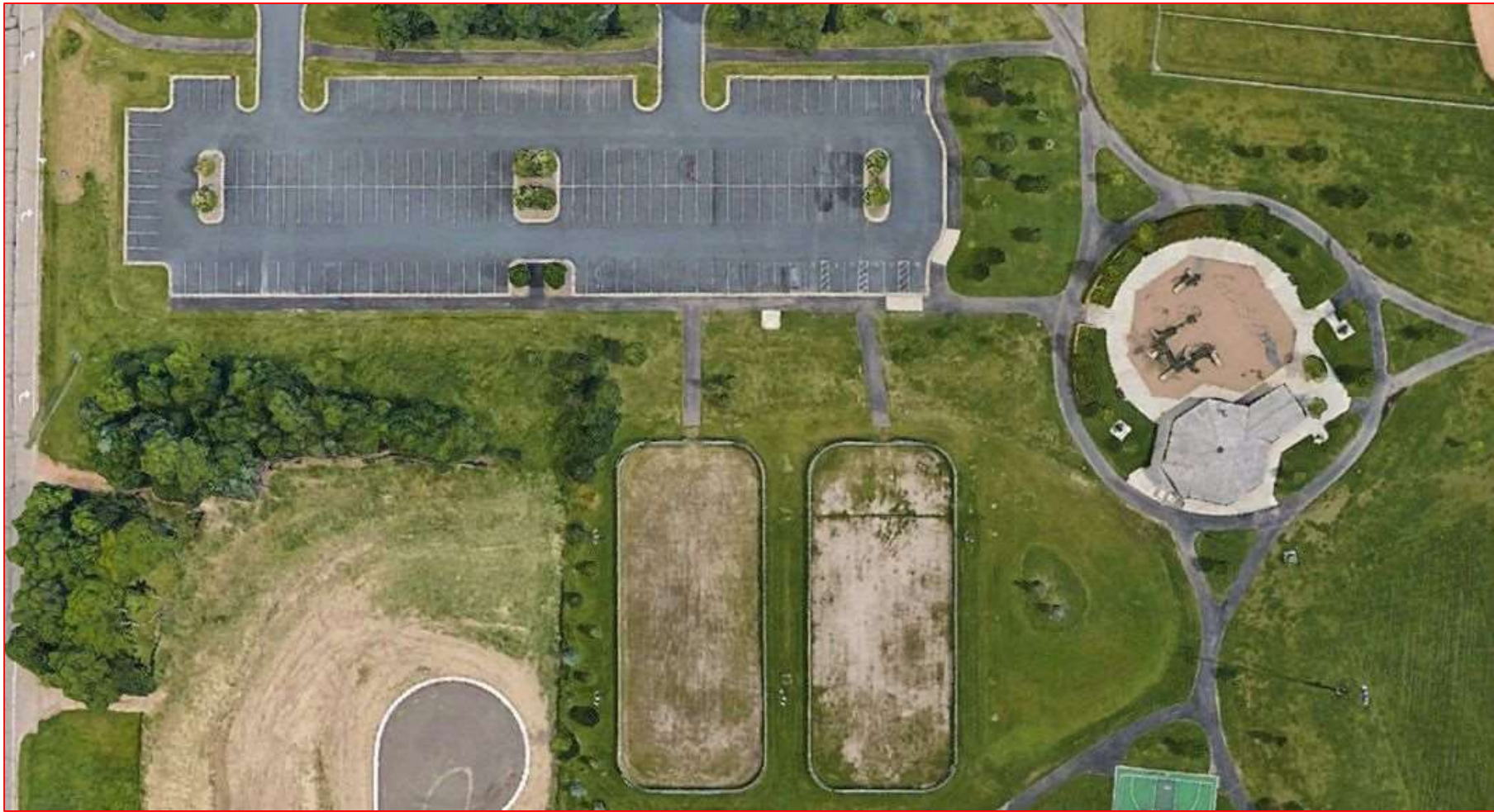
- Tim Arimond (NØBYH) conducted a class on using traps when installing an antenna in a small yard having limited space



SETTING UP

WOMEN  
AT  
WORK

# Gleason Fields Sky View







# STATIONS

ID	WHERE	HOST	RIG	MODE	ANTENNA
VOICE	RV	WØYES Pat Gearty	Kenwood TS 480	SSB	OCF DIPOLE
CW	R Tent	NØKBD Dave Johnson	Kenwood TS 2000	CW	OCF DIPOLE
FT8	L Tent	KØBHJ Benton Jackson	Yaesu FT-991a	FT8	OCF DIPOLE
6 Meters	Trailer	WØREW Roy Wood	Icom 706mkII	FT8	6 meter Yagi
GOTA	C Tent	KBØLTY Kelly Murphy	Yaesu FT DX 3000	SSB	DIPOLE

# OTHER TECHNICAL EQUIPMENT

- Generators:
  - Two Honda 2000 watt w 5 gallon tank. - Gordy
  - One Honda 2000 watt. – Roy
- Solar Power: 100 watt solar panel w 100 AH battery
- Wi-Fi & Cellular Internet: Brendon Paplow
- Antenna Line Launchers: Benton, Peter, Pat
- Roy's Trailer with many tools and supplies
- Coax, AC Cords, Ropes
- Antenna Analyzers - Several

# ANCILLARY EQUIPMENT

- **Tents/Shelters:** 3 Radio, 1 Information, 1 Food, 1 Gathering Space
- **Information Booth:** Sign-in, club business cards and membership information, donuts!, Bonzai maple tree
- **Food Station:** Tables, Cook Stove, Propane, Coolers **and LOTS OF GREAT FOOD**
- **Signage:** Entrance, Info Table, ARRL Special Services Club banner
- Hand truck to wheel tote boxes around

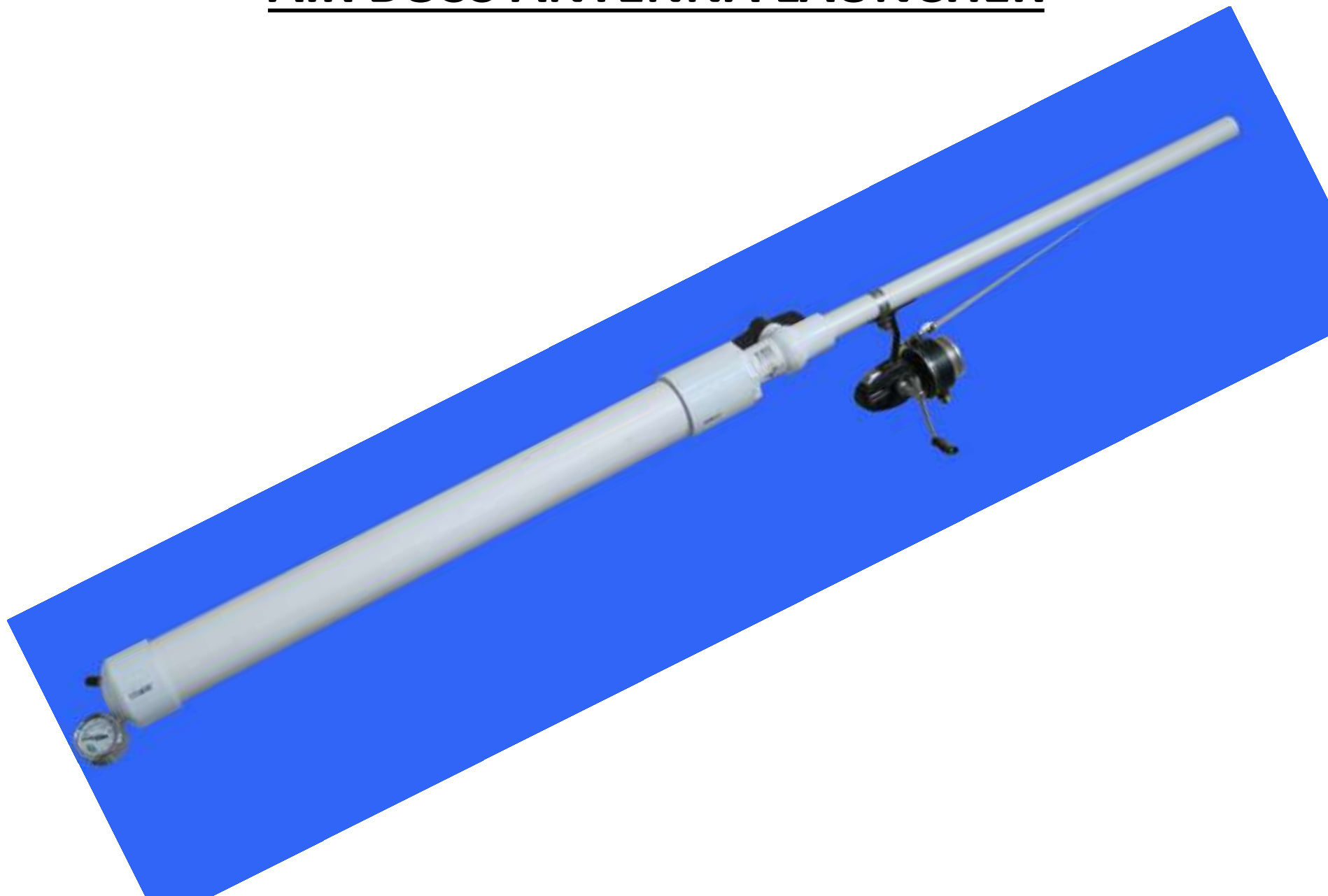
# EZ HANG ANTENNA LAUNCHER



# Big Shot Throw Line Launcher



# AIR BOSS ANTENNA LAUNCHER



# 7 BAND OCF ANTENNA

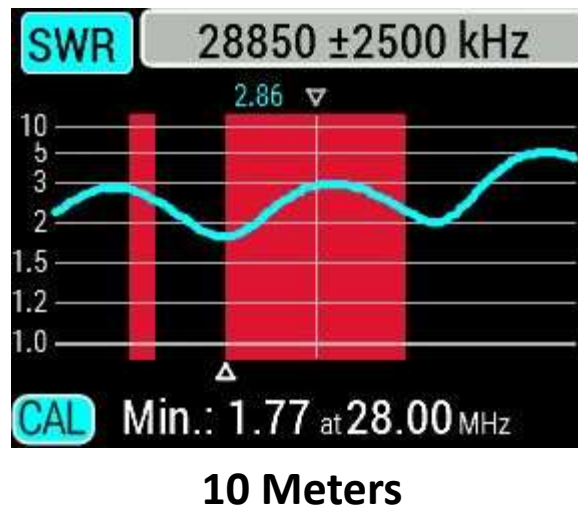
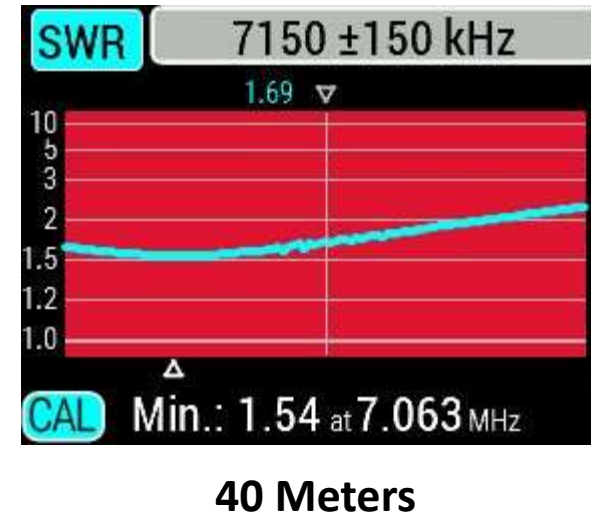
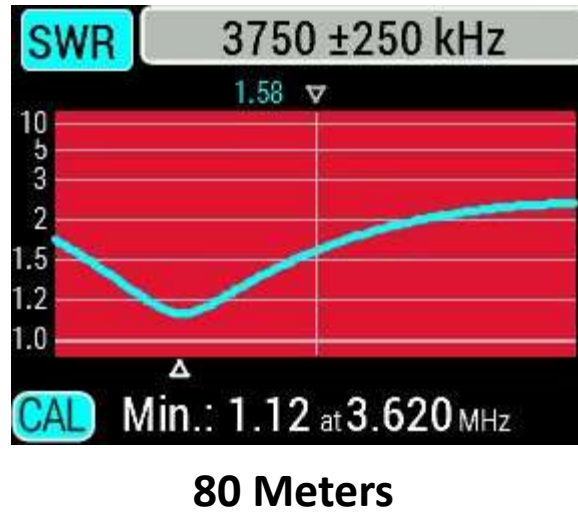
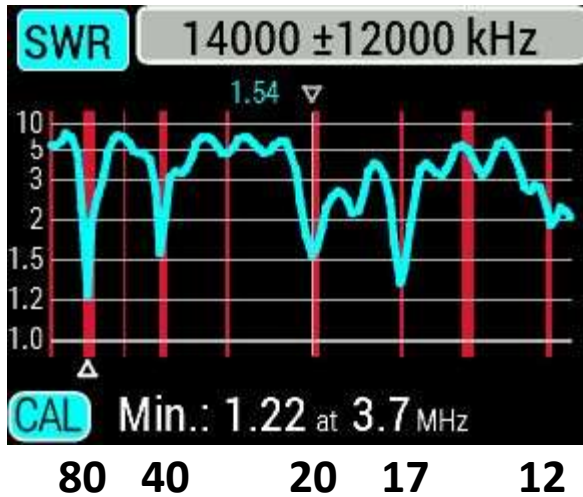
Dipole Antenna  
Off Center Fed  
80/75, 40, 20, 17, 12, 10, 6  
meters

135 ft. Length Total

One leg 90 feet in length  
and the other is 45 feet.



# Analyzer on 80 Meter OCF - Roy Built on Site

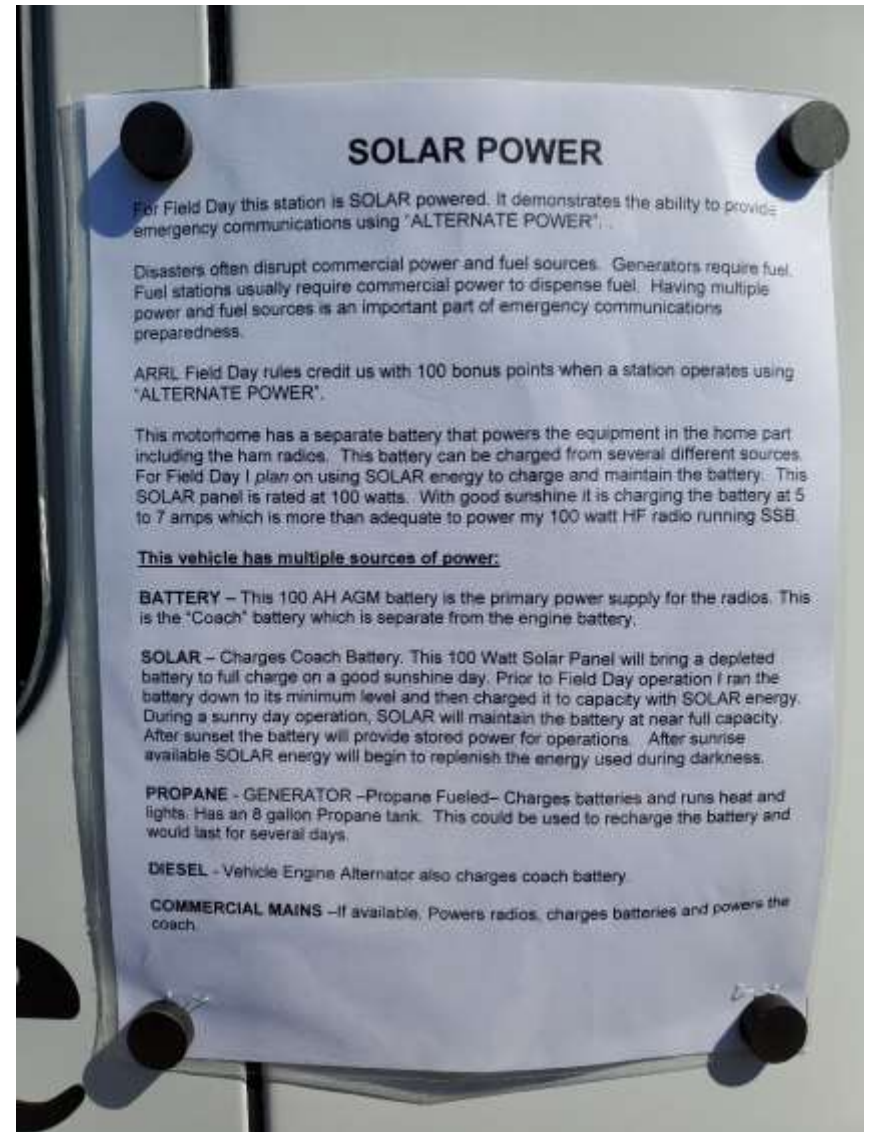






 **Maple Grove  
Radio Club**  
Providing Public Service  
Communications Support  
Learn more at: [www.mgtrc.org](http://www.mgtrc.org)

# NEW THIS YEAR – SOLAR POWER



Soldering irons and a torch. Make sure to have solder flux on hand



# CW STATION ANTENNA SETUP



# CW STATION ANTENNA SETUP CONTINUED

- Where's Carolyn???



# RV STATION

7 Band OCF used  
2017 > 2019

Buddipole Dipole  
on a 30' mast  
used 2017,18  
not 2019



# Comet 5 Band Rotatable Dipole



**V  
E  
R  
T  
I  
C  
A  
L**

**R7  
7  
Band  
Same  
As  
Shack**



# Band Pass Filters

## Station Band Scheduling



# COMPUTERS & NETWORK

- Each station used a PC for logging contacts
- All PCs were networked using Wi-Fi
- Internet access via cellular
- Used N1MM logging software providing:
  - Rig Control of Radio
  - Running log of all contacts
  - Each station sees all other station contacts
  - Duplicate contact flag
  - Summary log used to submit entry to ARRL

# N1MM LOGGING SOFTWARE

The screenshot displays the N1MM logging software interface. The main window shows a log table with columns for date, time, call, frequency, mode, class, section, and operator. A secondary window, titled '14242.20 USB Manual - VFO A Op: W0YES', is overlaid on the log table, showing a control panel with various buttons and indicators.

MM-DD	...	Call	Freq	M..	E.	S..	P.	Op	Computer
06-23	17:53	W8AJT	13999.98	CW	3A	OH	2	KØLTC	6120-2
06-23	17:45	W2MMD	13999.98	CW	6A	SNJ	2	KØLTC	6120-2
06-23	17:44	N4N	50314.92	FT8	5A	GA	2	WØREW	E6410-LA...
06-23	17:43	N4T	13999.98	CW	3A	TN	2	KØLTC	6120-2
06-23	17:42	KP4AJ	50314.92	FT8	1D	PR	2	WØREW	E6410-LA...
06-23	17:41	W8ID	13999.98	CW	3A	OH	2	KØLTC	6120-2
06-23	17:39	WS4S	50314.08	FT8	1E	TN	2	WØREW	E6410-LA...
06-23	17:38	W9GA	13999.98	CW	4A	WI	2	KØLTC	6120-2
06-23	17:35	W9VB	13999.98	CW	3A	IL	2	KØLTC	6120-2
06-23	17:33	WB5LVI	50315.38	FT8					
06-23	17:31	WB5GVY	50314.30	FT8					
06-23	17:29	WB5LVI	50315.38	FT8					
06-23	17:28	KG5YXP	50313.73	FT8					
06-23	17:26	W5IRP	50314.56	FT8					
06-23	17:22	W5AWL	50314.91	FT8					
06-23	17:21	WB5LVI	50315.38	FT8					
06-23	17:19	W8MAI	14000.00	CW					
06-23	17:17	W9TY	14000.00	CW					
06-23	17:15	WE9EE	14216.00	USB					
06-22	23:25	W1AW	14331.90	USB					

The control panel window shows the following details:

- File Edit View Tools Config Window Help
- Class: 3F, Section: DT
- Call: W1AW
- Buttons: F1 S&P, F2, F3, F4, F5 His, F6, F7 Rpt, F8, F9, F10, F11, F12, Esc: Stop, Wip, Log, Edit, Mar, Sto, Sp, QRZ
- Indicators: Run (green dot), S&P (red dot)
- Bottom status: K: NA/UNITED STATES, Zn 5, 389, 1,264







EAT! I don't want to take anything home



# OPERATING



# MULTI OP

## Multiple Operators for 1 Station

- Each station is setup by a host and available for use by anyone. CW, FT8 digital, SSB Voice
- Visitors & Operators WELCOME!
- FD is a opportunity to make **many** contacts
- Watch, Listen, Ask, Learn & **OPERATE**
- Team effort: One operates, the other logs
- Caroline taught me that “Running” was more productive than “Search & Pounce”!



# GOTA STATION

(Get On The Air)

I don't have to track satellites?



# GOTA Station



CQ, CQ Field Day

# FT8 DIGITAL STATION





# AMATEUR RADIO SATELLITE OPERATION



Point it to the bird!

# 6 METER STATION



Listen and learn! I've done this before

Why don't you use this frequency?

# VOICE STATION

I Like to Hear Myself Talk



# CW STATION



Look Ma! No Key!

# LATE NIGHT SHOW



# ENTRY RESULTS SUBMITTED TO ARRL

CALL USED: KØLTC

GOTA CALL: KØYTH

ARRL/RAC SECTION: MN

CLASS: 3A

PARTICIPANTS: 64

POWER SOURCES; GENERATOR, SOLAR

POWER MULTIPLIER: 2X

PRELIMINARY TOTAL SCORE: 2,530

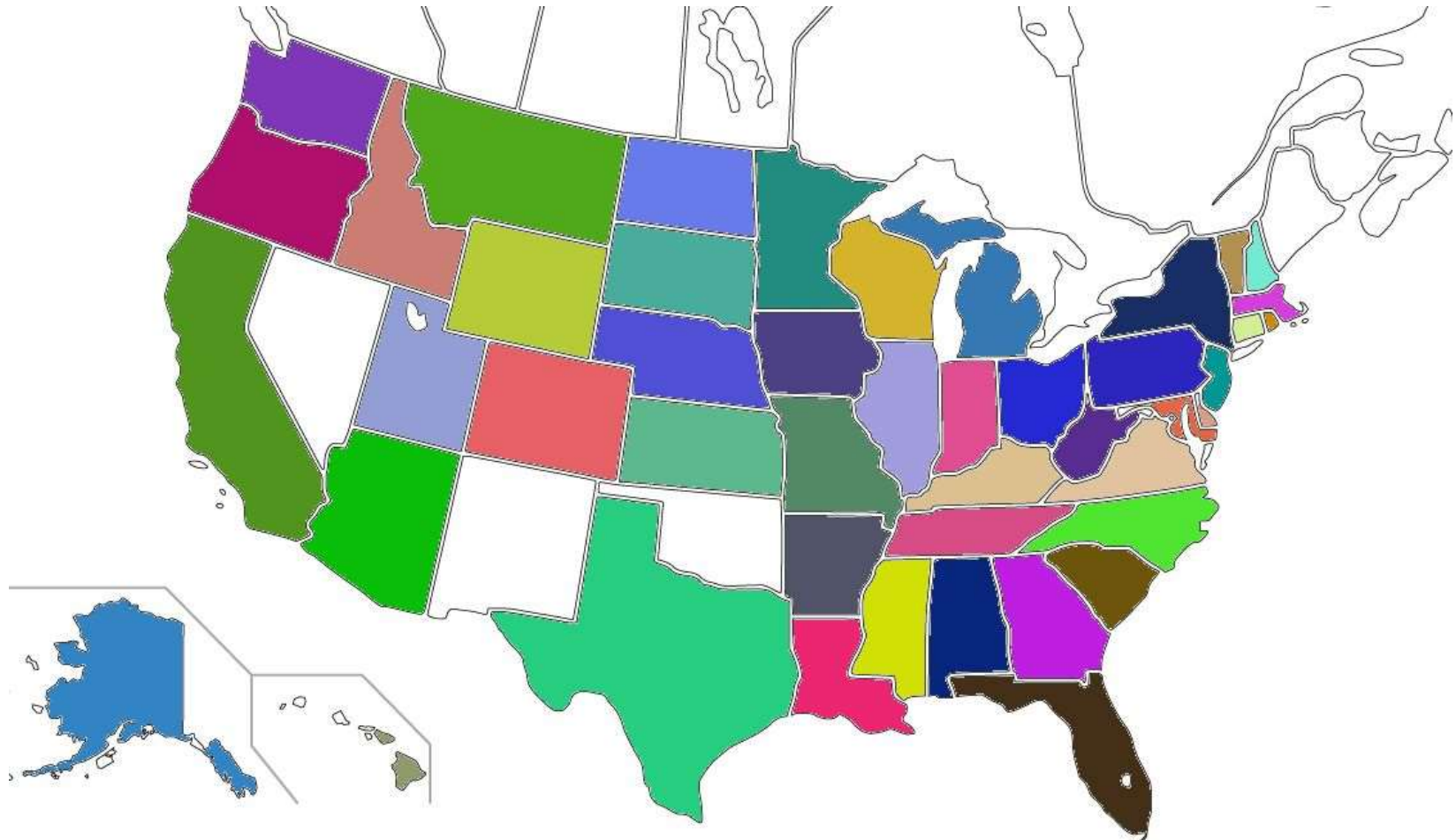
# **BONUS POINTS (53% of our total score)**

100% emergency power	300
Media Publicity	100
Public location	100
Public information table	100
Natural (Solar) power	100
Site visit by invited elected official	100
Site visit by invited served agency	100
Educational activity	100
Youth participation	40
Safety officer	100
Social media	100
GOTA Station	40
Entry submitted via web	50
Total bonus points	<b>1,330</b>

# QSOs & POINTS

	BAND	TOTAL	SSB	CW	FT8
<u>QSOs</u>	80	19	7		12
	40	132	37	42	53
	20	177	102	57	18
	15	5			5
	10	2			2
	6	27			27
	GOTA	22	22		
<u>QSOs</u>	TOTAL	384	168	99	117
<u>LOG POINTS</u>	1200	600	168	198	234
<u>TOTAL SCORE</u>		1200 + 1330 bonus = 2530			

# STATES & DXCC ENTITIES WORKED



46 STATES WORKED - NOT WORKED IN WHITE: MAINE, NEW MEXICO, NEVADA, OKLAHOMA

## 7 DXCC ENTITIES WORKED

USA, ALASKA, HAWAII, PUERTO RICO, CANADA, VIRGIN IS, EURO RUSSIA

**DONE!**  
**LEFT NO TRACE**



# THANKS!

Melanie Olson sent very personal *Thank You* cards to many on behalf of the club



# FIELD DAY 2019

## MAPLE GROVE RADIO CLUB - KØLTC

